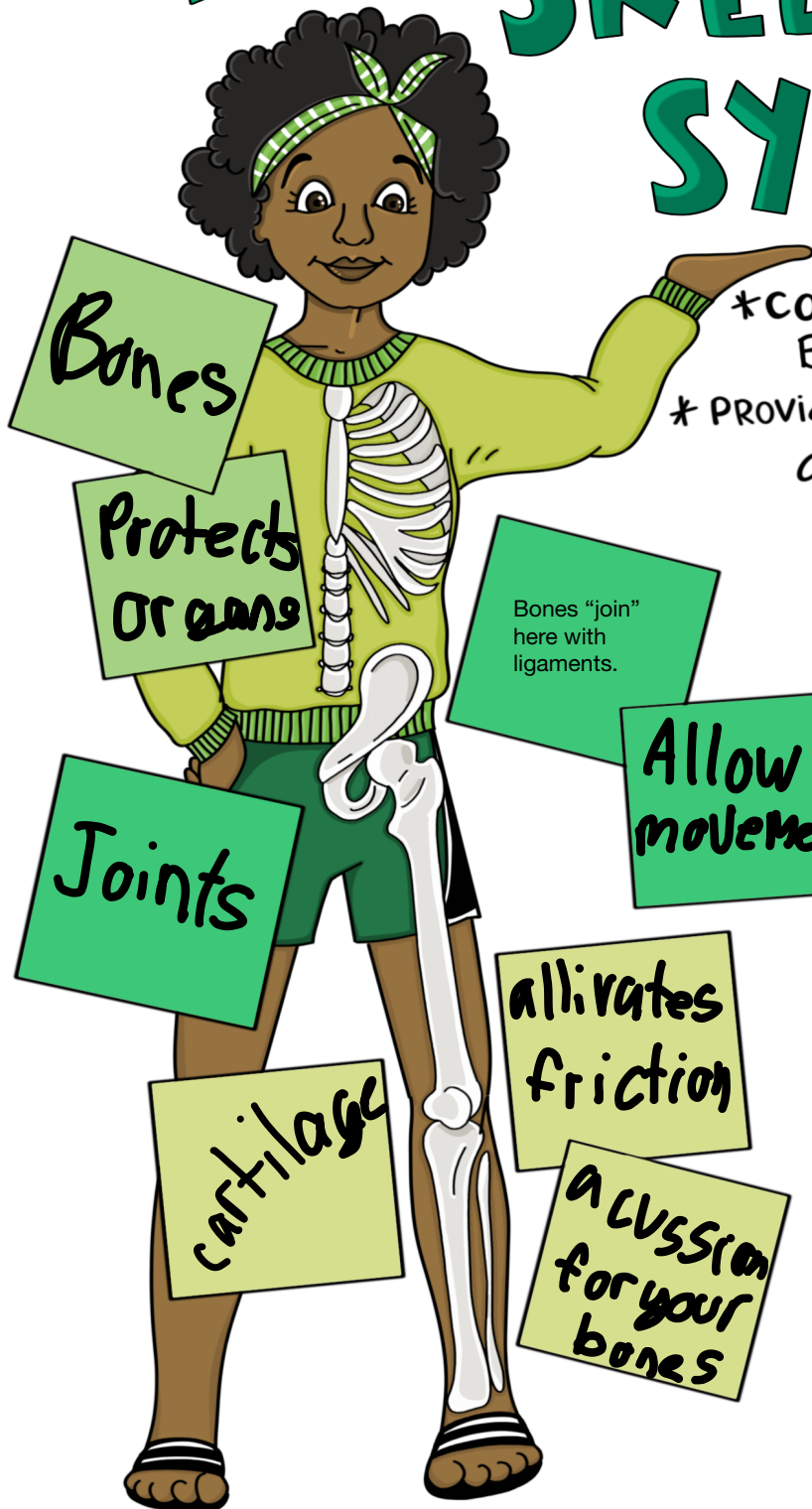
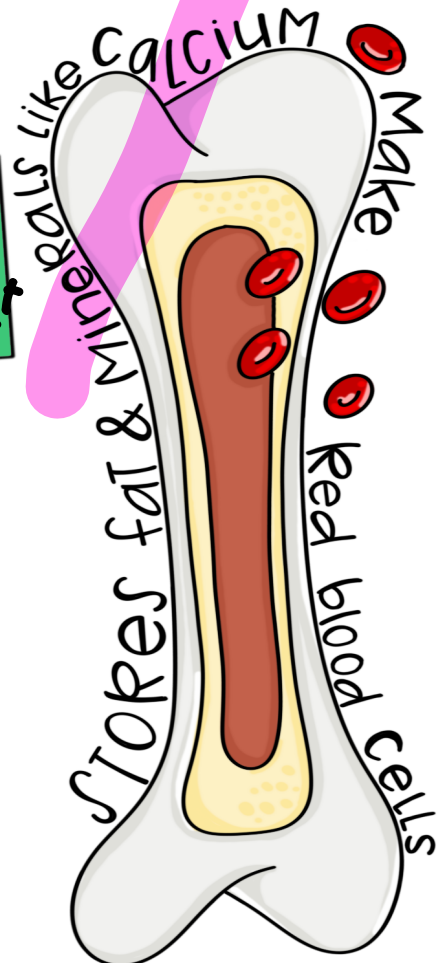


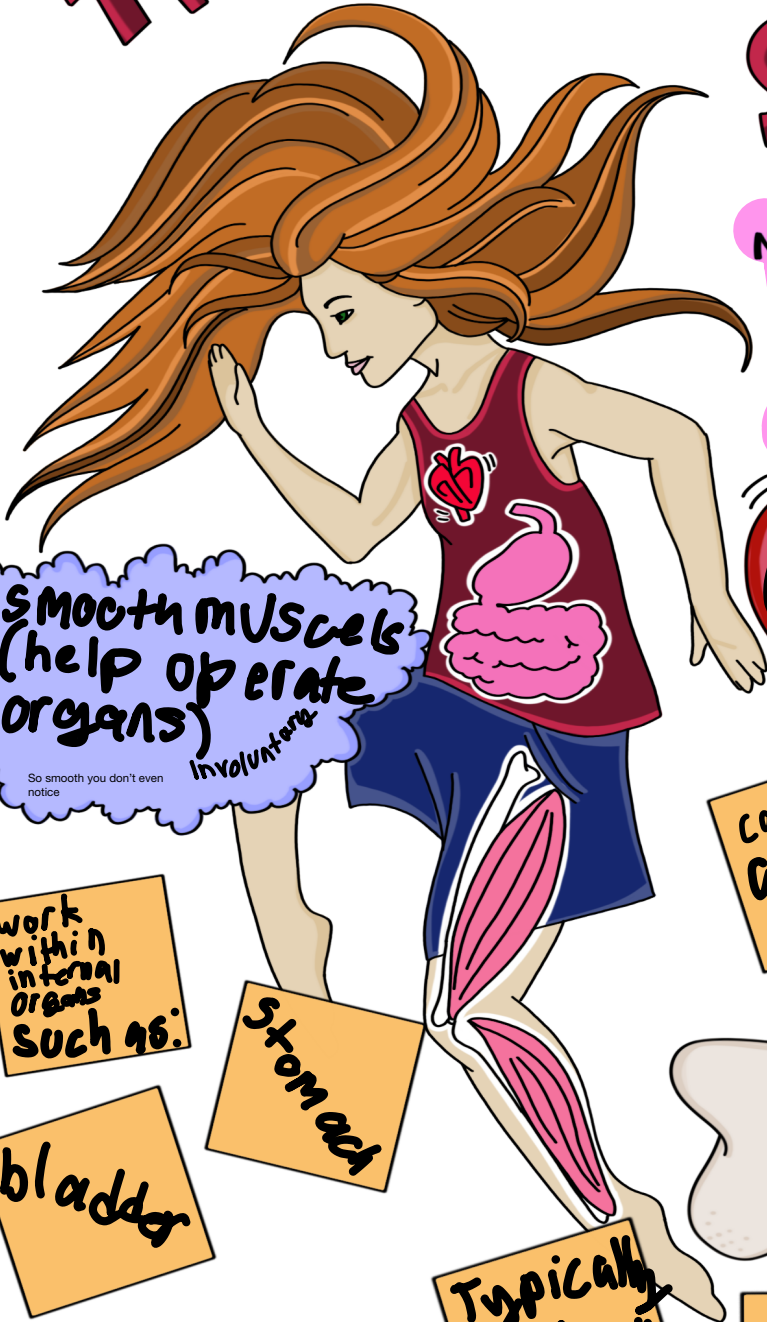
The SKELETAL SYSTEM



*CONSISTS OF JOINTS, BONES, & CARTILAGE
* PROVIDES STRUCTURE, SUPPORT and PROTECTION



THE MUSCULAR SYSTEM



Movements you can voluntarily and involuntarily do are controlled by the muscular system

Smooth muscles (help operate organs)
Involuntary
So smooth you don't even notice

Cardiac muscles (*keep the heart pumping)
Involuntary

work within internal organs such as:

Stomach

bladder

Typically works in pairs

constantly at work

all in your heart

Skeletal muscles
*move your bones
*voluntary

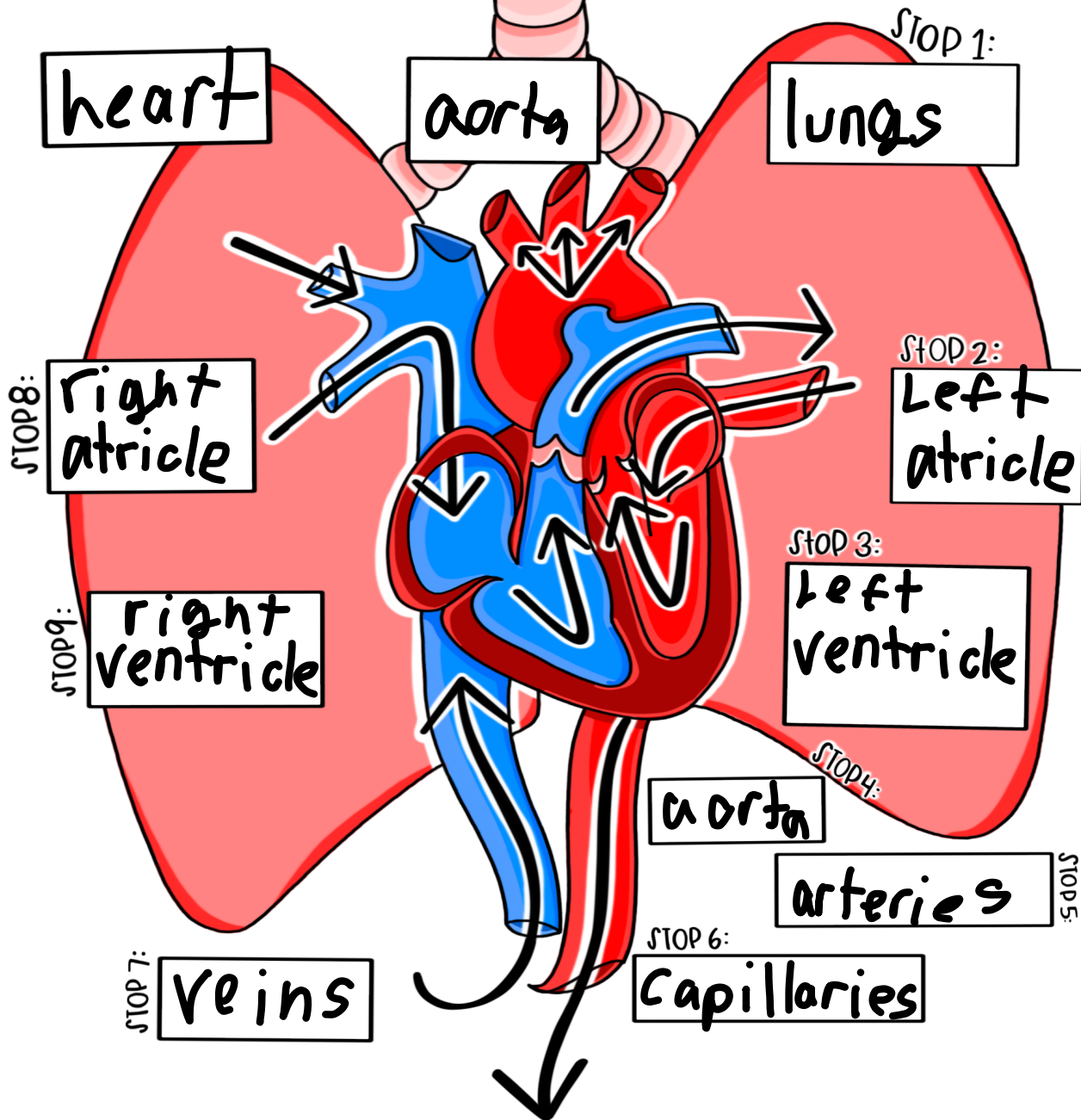
Take turns contracting & relaxing

Connect to bones via tendons

THE CIRCULATORY SYSTEM

■ = oxygenated blood

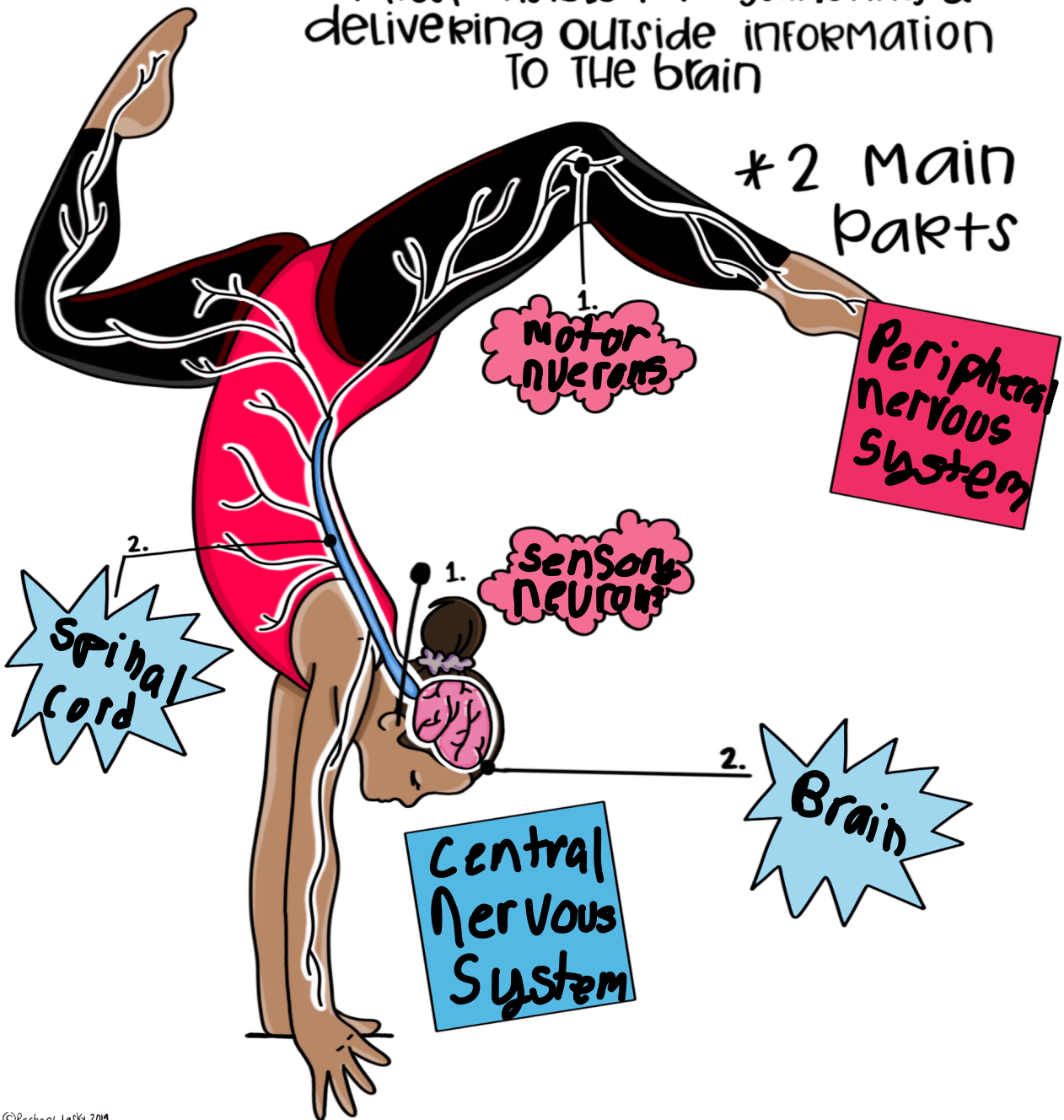
■ = deoxygenated blood



THE NERVOUS SYSTEM

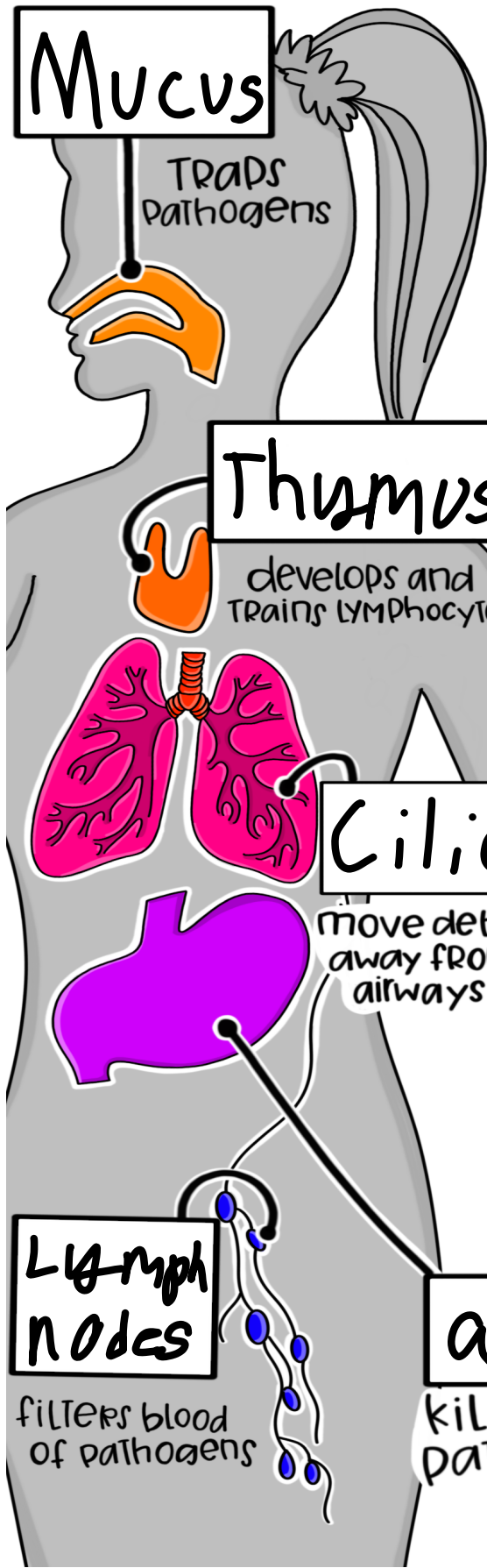
* Responsible for gathering & delivering outside information TO THE brain

* 2 Main parts



The IMMUNE SYSTEM

• PROTECTS YOUR BODY FROM FOREIGN INVADERS, CALLED PATHOGENS, FROM CAUSING HARMFUL INFECTIONS & DISEASE



Mucus

TRAPS PATHOGENS

Thymus

develops and TRAINS LYMPHOCYTES

Skin

YOUR BODY'S LARGEST ORGAN IS THE 1ST LINE OF DEFENSE AGAINST PATHOGENS

Cilia

move debris away FROM airways

White blood cells

destroy pathogens

bone marrow

PRODUCE RED BLOOD cells, white blood cells & platelets

Lymph nodes

filters blood of pathogens

Acids

kills many pathogens

The EXCRETORY SYSTEM

*REMOVES (EXCRETES)
bodily waste

Kidneys

Filter
Waste in
blood

Bladder

Stores
urine



Ureter

funnels
filtered
fluid to
bladder

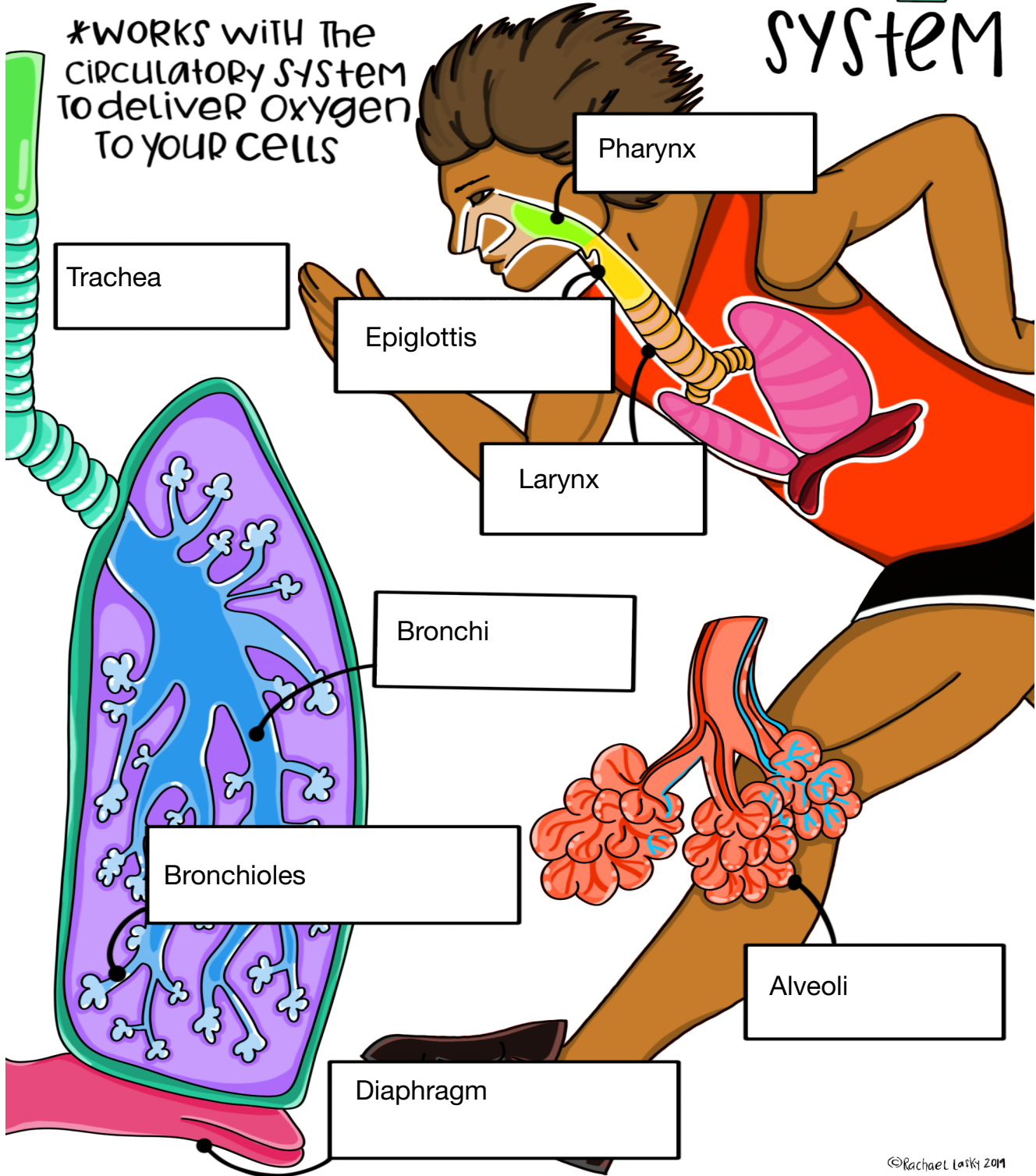


expels
urine

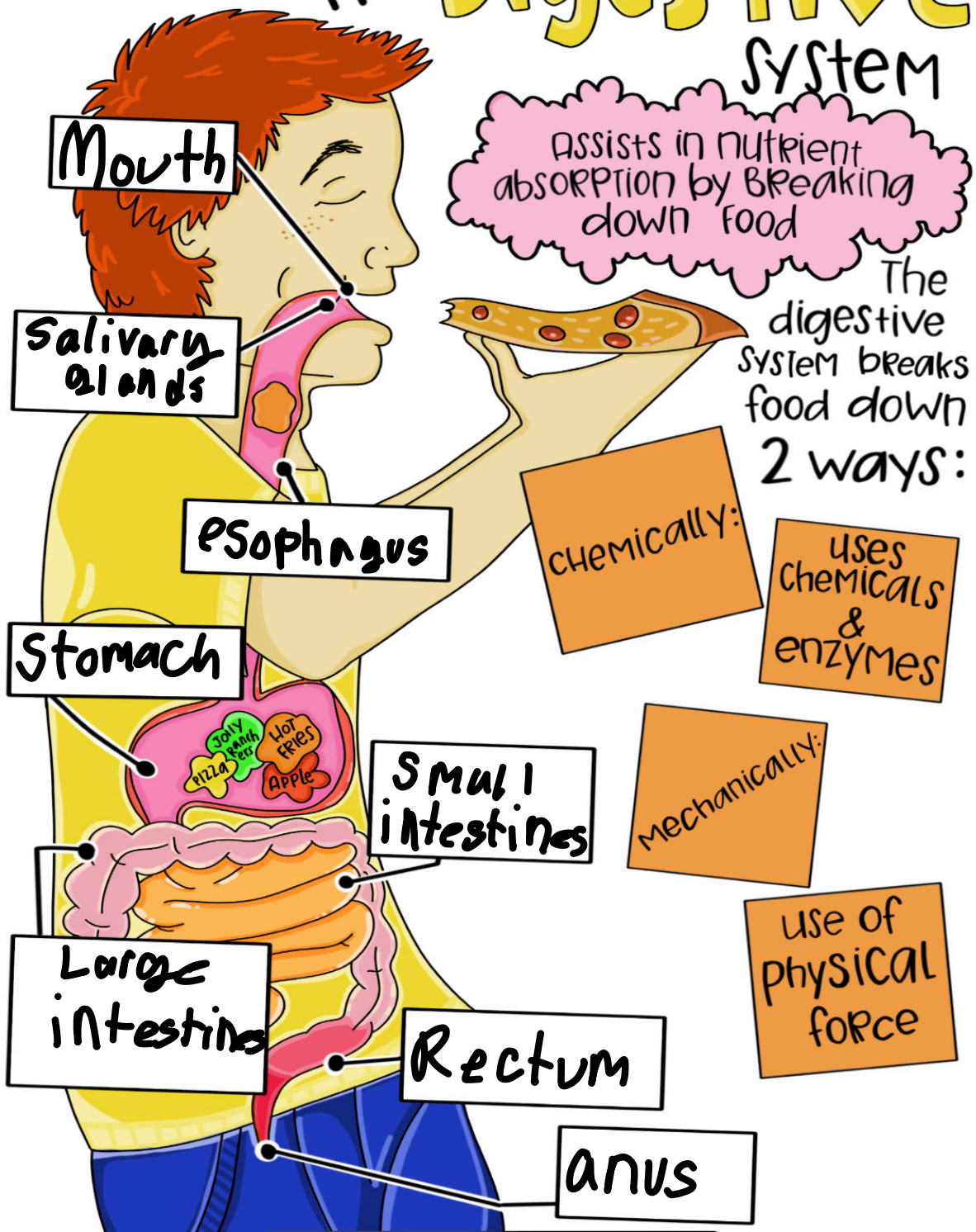
Urethra

The RESPIRATORY SYSTEM

*WORKS WITH THE CIRCULATORY SYSTEM TO DELIVER OXYGEN TO YOUR CELLS



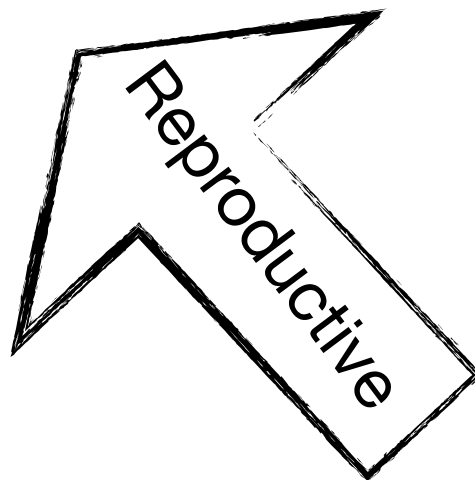
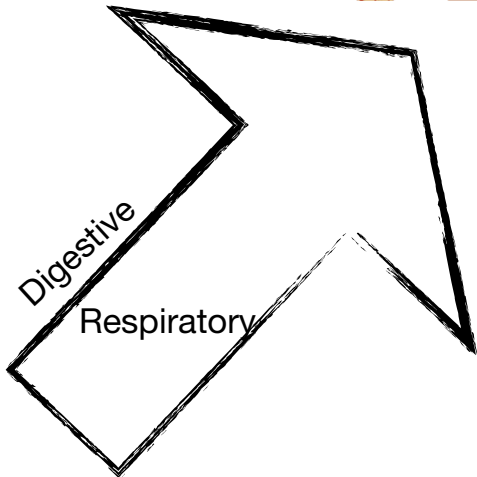
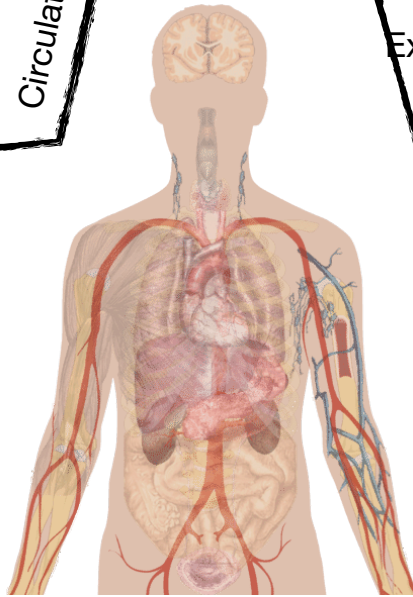
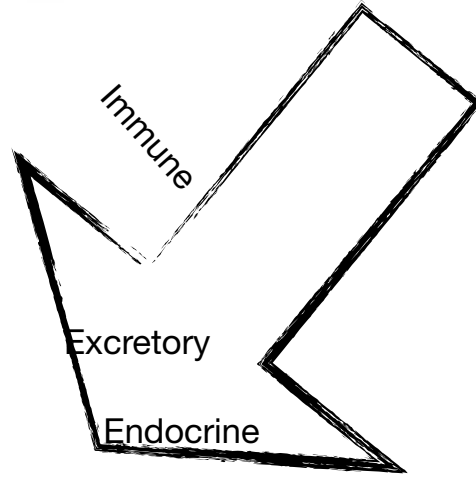
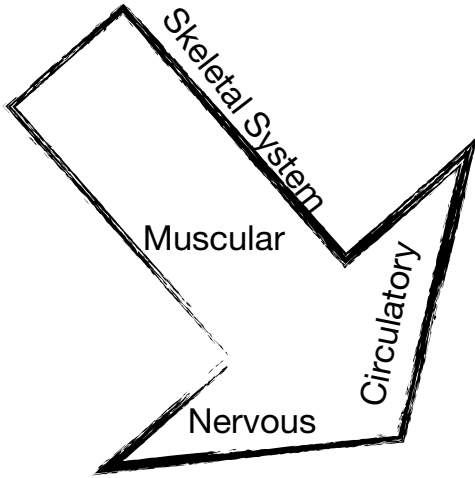
The Digestive System



INFRASTRUCTURE



REGULATION

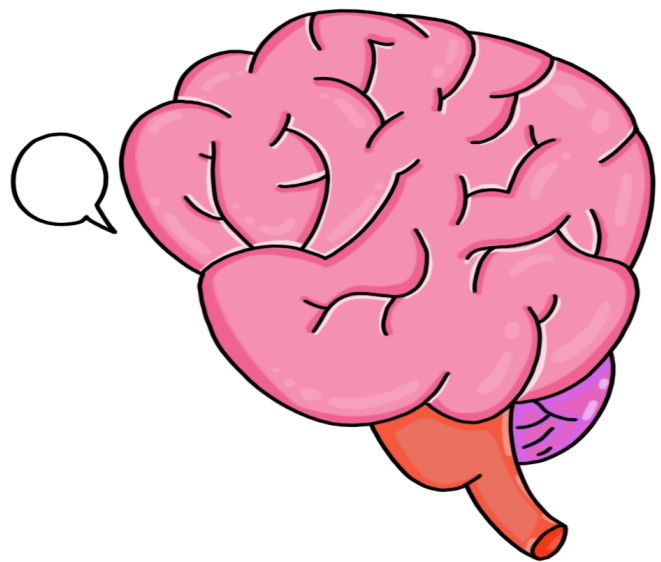
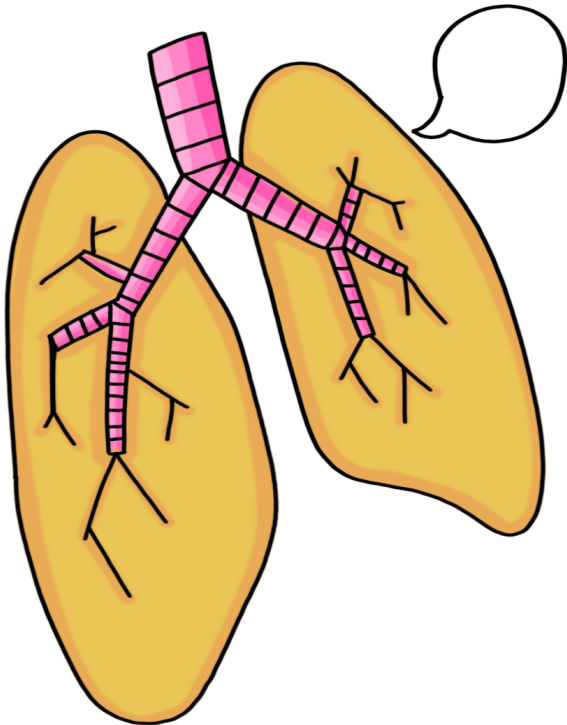
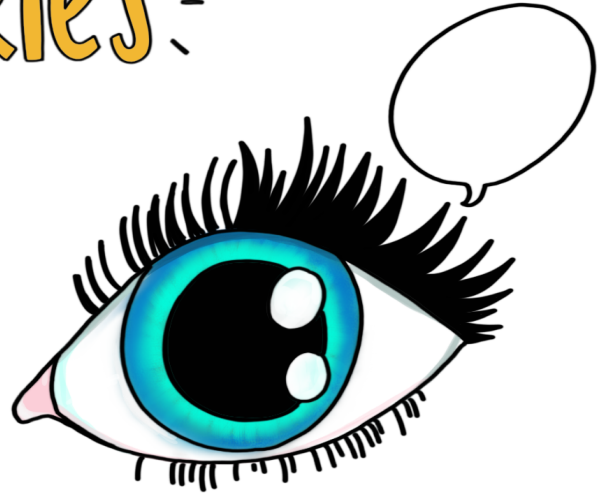


ENERGY

reproduction

Fight OR FLIGHT?

Reacting to the
SCARIES!



Based on what you have learned about how the various body systems work, now analyze the following situation and explain how the body systems would work together in the situation.

https://youtu.be/loJ8sHly_fm

You are being chased in any of these situations by Jurassic World dinosaurs. How do your body systems work together. Link at least 5 of the body systems that we discussed in your analysis.

Erase to get my response

